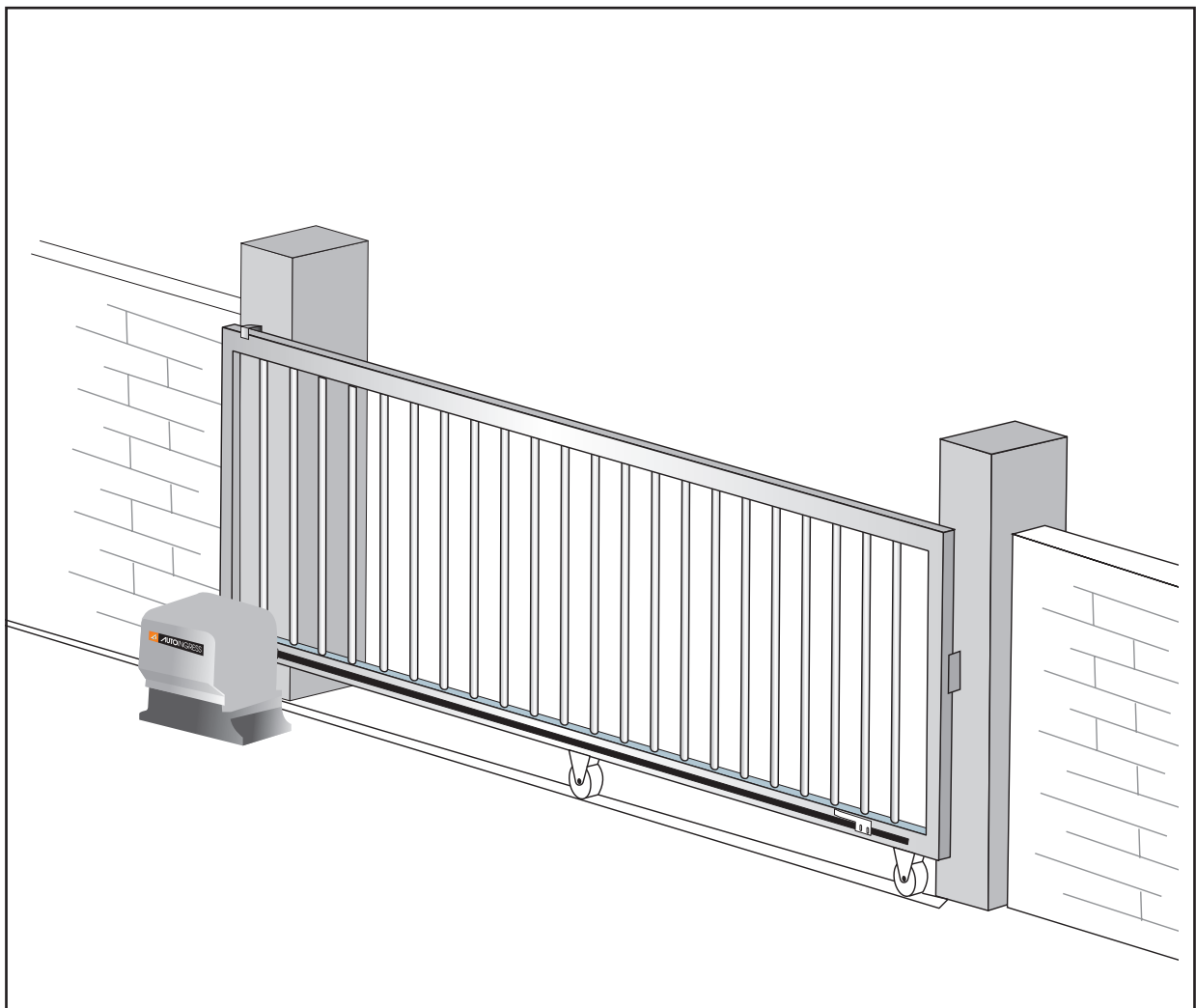




AUTOMATIC SENSOR DOORS

Installation Manual

Sliding Gate Operator



Automatic Entrance Solution Provider

DESIGN | MANUFACTURE | SALES | SERVICE

IMPORTANT SAFETY MESSAGE

Thank you for your purchase of our automatic gate equipment.

Your automatic gate operator has been designed and manufactured to comply with stringent safety requirements for compliance to the Australian standard.

It is essential that you make yourself familiar with and at least once a week or more regularly check the safety features of the gate to ensure safety of the users. If you find that the gate operator is unsafe then it must be rendered to a safe condition by either leaving it fully open or fully shut.

Always engage Auto Ingress authorized service technician for periodic inspections and maintenance of this equipment.

We recommend services every quarter of the year to ensure safety of users and longevity of operator life cycle.

In accordance with the safety and maintenance requirements of this equipment, Auto Ingress has developed a set of procedures to ensure optimum safety and long term reliability of this installation.

Safety Precautions

- Wrong operation may result in injury or even death to the user.
- Wrong operation may result in injury or physical damage to the operator.
- This operator needs to be connected with stabilised and uninterrupted power supply for safety of micro-controller unit and the operator.
- Installation and adjustment must be carried out according to the Installation Manual. Carelessness in installation and adjustment may result in accidents such as fire, electric shocks or fall off.
- During the installation do not allow the pedestrians to pass through the automatic gate or approach the work site. Because any tools or parts fall off during the installation may result in injury to the pedestrians.
- Don't remodel the parts , otherwise fire , electric shocks or fall may occur.
- Don't use the power beyond the stipulated voltage or frequency, otherwise fire or electric shocks may occur.
- Do fix up auxiliary safety beam sensor to ensure the detecting range for the walking area of the gate leaf, otherwise the passers-by may be collided or squeezed by the gate leaf, causing injury.



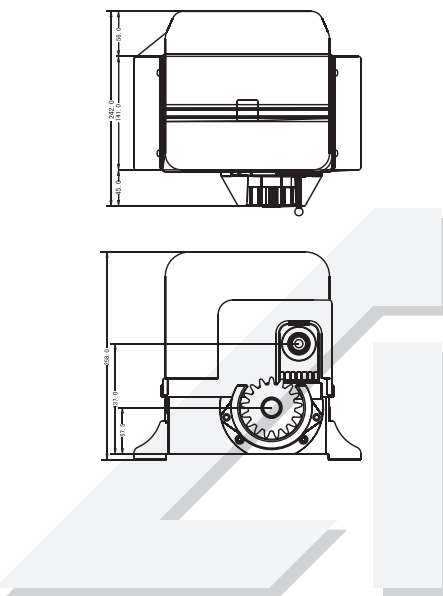
Caution

- CAUTION! For personal safety, it is important to follow all the instructions carefully. Incorrect installation or misuse of the product may cause serious harm to people.
- Don't use the gate in a place subject to dampness, vibration or corrosive gas, otherwise it may cause accidents such as fire , electric shocks or fall.
- Make sure that suitable space be available after the gate is opened, otherwise user's fingers may be squeezed by the gate leaf.
- Don 't cut off power when the gate is in operation , otherwise it may result in accident to passers-by.
- Please stick the adhesive sticker on the gate leaf firmly . If not, it may cause injury to the passer-by who didn't pay attention to the gate leaf.
- Don't connect an external electric device to the micro controller as it may cause fire .
- Keep the instructions in a safe place for future reference.
- This product was designed and manufactured strictly for the use indicated in this document. Any other usage not expressly indicated in this Document, may damage the product and/or be a source of danger.
- Do not install the machine in an area subject to explosion hazard. Inflammable gasses or fumes are a serious safety hazard.
- Before carrying out any work on the system, turn off the electricity supply.
- Do not make any alterations to the components of the automatic operator.
- Do not allow children or other people to stand near any moving part of the gate while in operation.
- Keep transmitters away from children to prevent the machine from being activated accidentally.
- Disconnect the supply when cleaning or other maintenance is being carried out, if the appliance is automatically controlled .
- The electrical cord plug must plug in ingate outlet or waterproof cover outlet.

Other Precautions

- Don't use a gate leaf that exceeds the specified weight, otherwise it will cause failure.
- If you chose the electromagnetic lock, don't use it in an environment beyond an ambient temperature, otherwise it will cause malfunction.
- The graphic drawings and specifications in this manul are for reference only. You should rely upon real objects. Product designs are subject to change without notice .



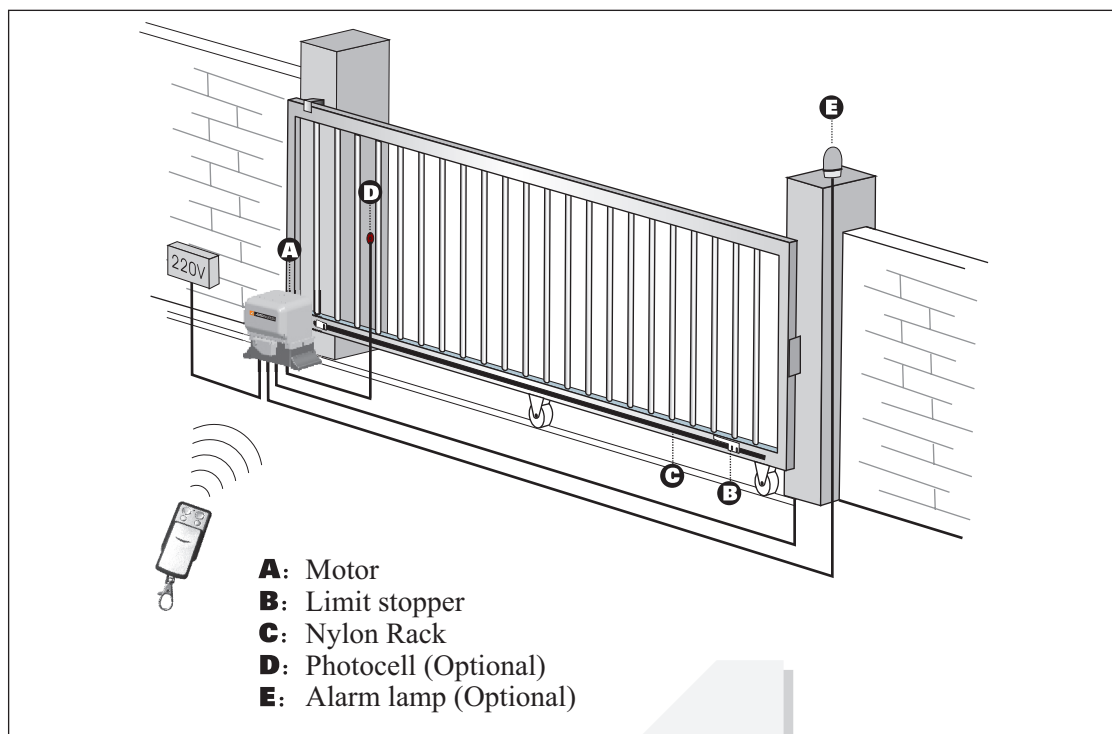


- * Built-in control board.
- * Terminals for Push button, Photocell, Alarm lamp.
- * Auto-closing is available, time delay is adjustable.

Installation

- Before using the machine, check power supply, grounding, voltage, etc.
- Check whether it is connected according to the demand of wiring diagram.
- The gate should be pulled easily and smoothly manually when the worm gears are released.
- The worm gears will be coupled before power on.
- The product must be installed by Auto Ingress authorised technician.

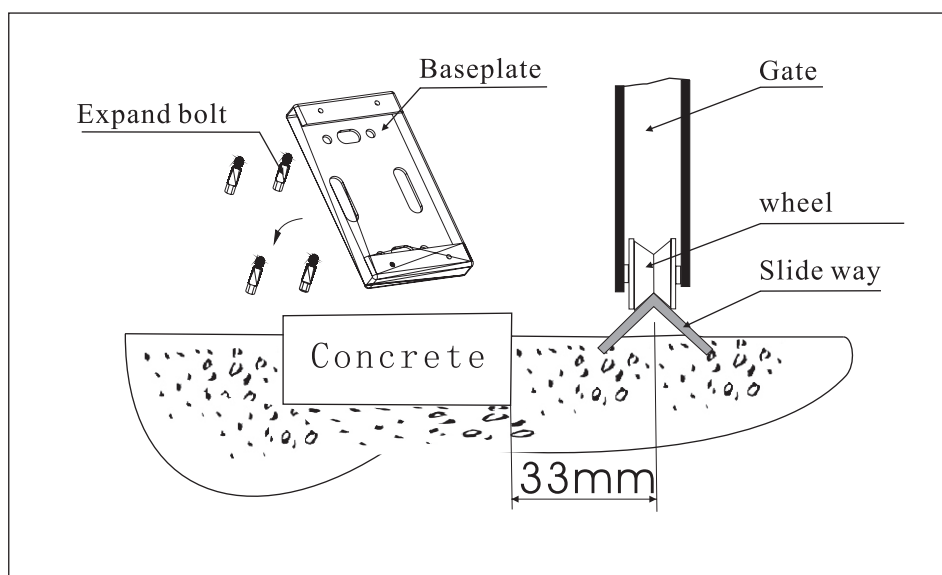
Example of an installed automatic sliding gate



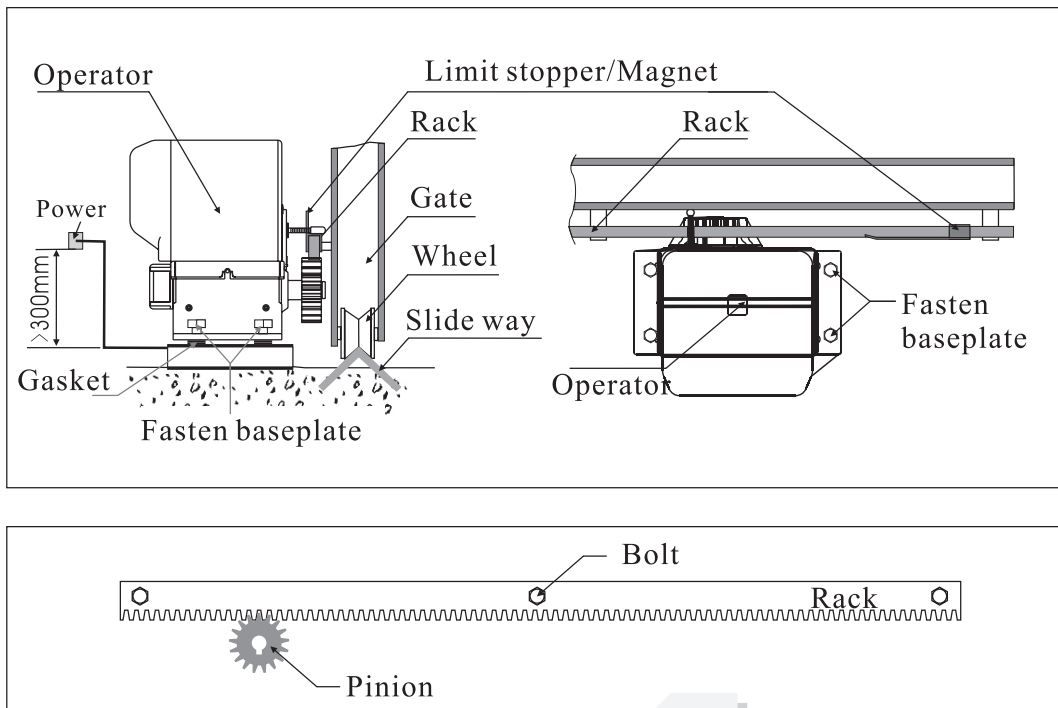
Installation and adjustment

Install baseplate on the ground, then, fasten the sliding motor on the baseplate.

Key: Ensure baseplate on level position.



Install the limit stopper or limit magnet at proper position on the rack

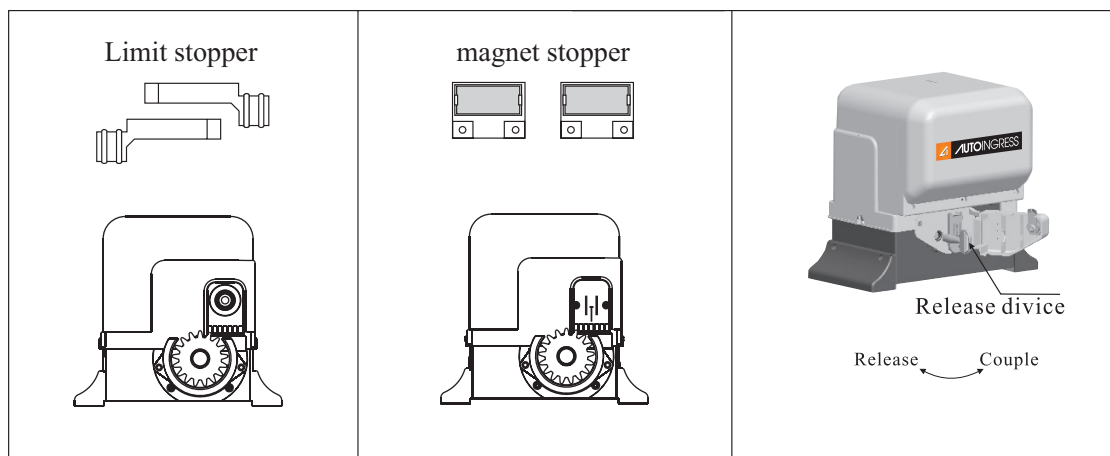


Note : Wait of the gate should be in the wheels and not in the pinion.

Rack to be installed correctly to avoid weight in pinion.

The space between rack and pinion gear is about 0.5mm.

Before place the limit stopper or magnet on the rack, the gear box of the operator must be released. As per Fig, Use the key tum clockwise to release the gear.



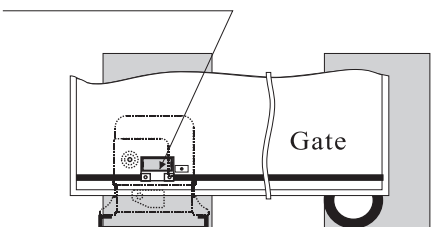
Move the gate manually to the open limit and close limit, mark the points on the Rack, then, fix the limit Stoppers or Magnets at the limit points on the Rack.



Standard installation layout

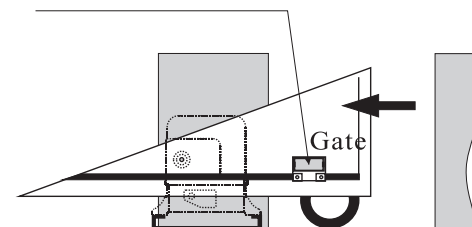
When the Operator is installed on Left Side.

Close Limit stopper/magnet

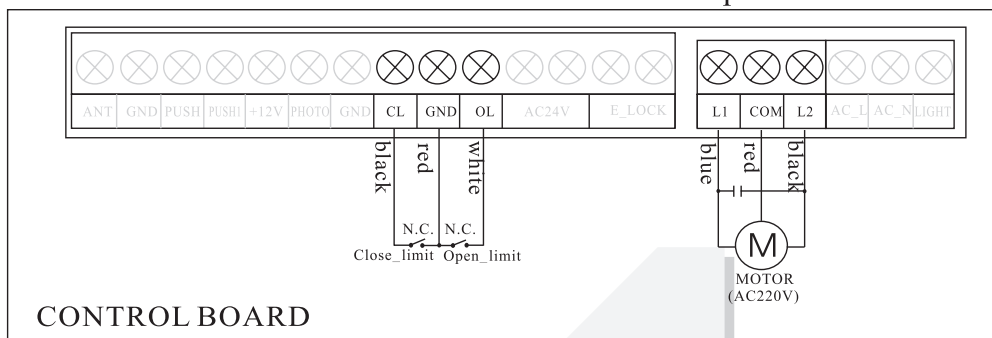


Closed state

Open Limit stopper/magnet

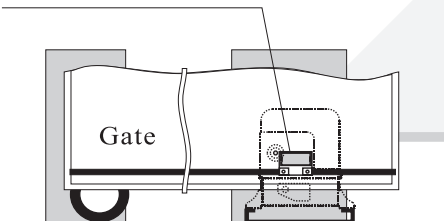


Open state



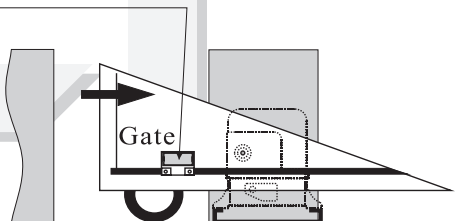
When the Operator is installed on Right Side.

Close Limit stopper/magnet

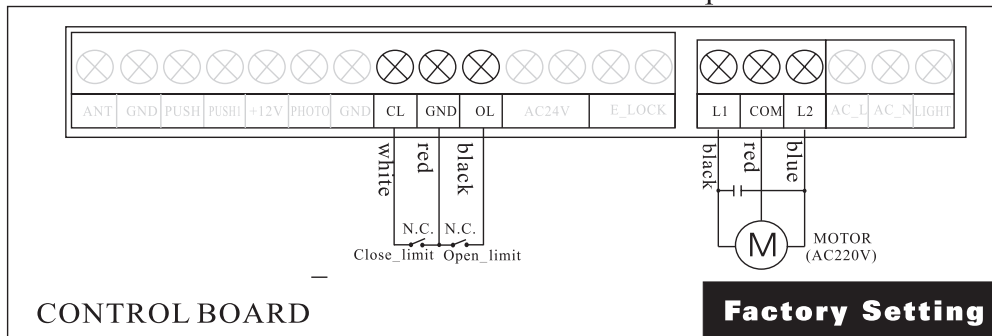


Closed state

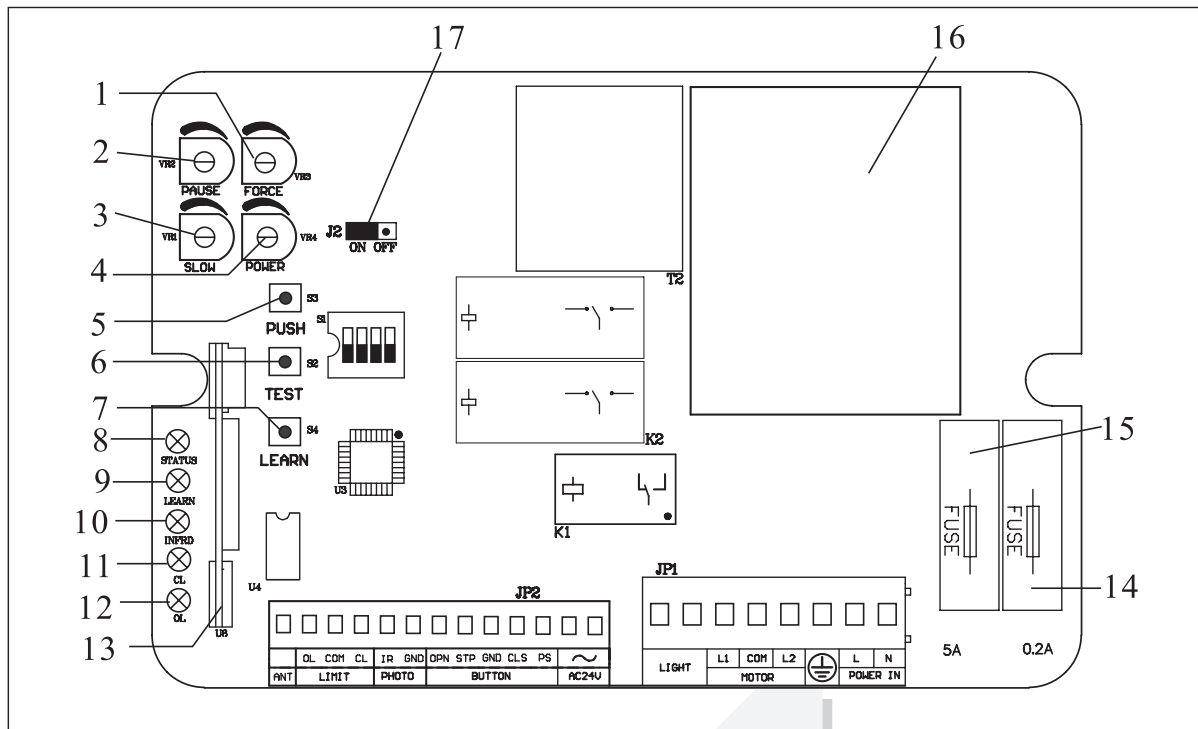
Open Limit stopper/magnet



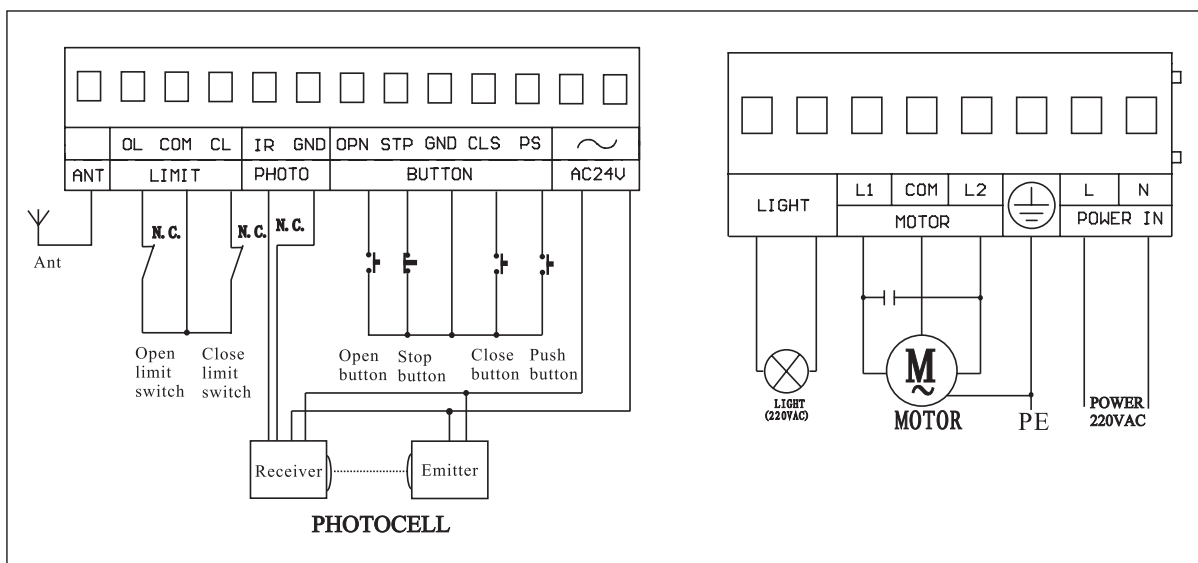
Open state



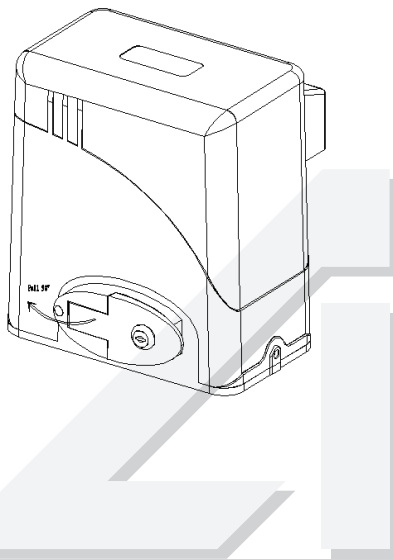
AC control board



- | | |
|-------------------------------------|---|
| 1. VR3: Trimmer of resistance force | 10. Photocell LED (N.C.) |
| 2. VR2: Trimmer of pausing time | 11. Close limit LED (N.C.) |
| 3. VR1: Trimmer of slowing power | 12. Open limit LED (N.C.) |
| 4. VR4: Trimmer of power regulation | 13. Receiver |
| 5. Push button | 14. Fuse (0.2A) |
| 6. Test button | 15. Fuse (5A/220V, 8A/110V) |
| 7. Learn button | 16. Transformer |
| 8. Status LED (Flash on running) | 17. Jumper for reverse function (ON: valid, OFF: invalid) |
| 9. Learn LED | |



AI-SLG-500



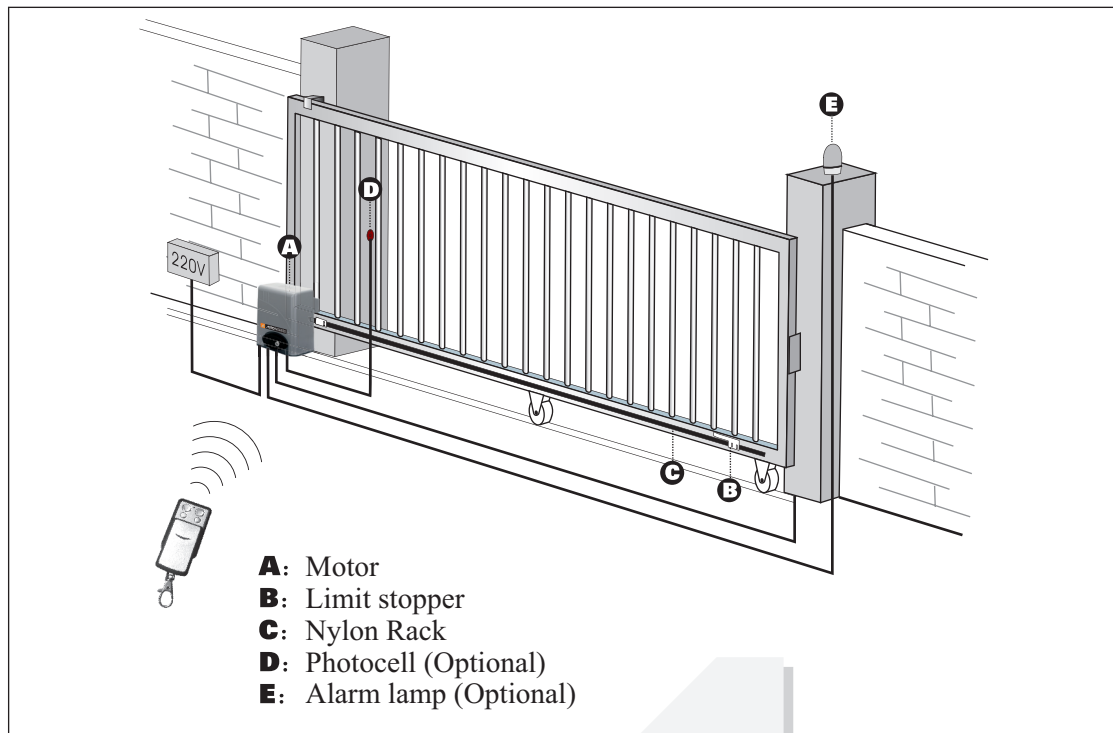
- * Built-in control board.
- * Terminals for Push button, Photocell, Alarm lamp.
- * Auto-closing is available, time delay is adjustable.

Installation

- Before using the machine, check power supply, grounding, voltage, etc.
- Check whether it is connected according to the demand of wiring diagram.
- The gate should be pulled easily and smoothly manually when the worm gears are released.
- The worm gears will be coupled before power on.
- The product must be installed by Auto Ingress authorised technician.



Example of an installed automatic sliding gate

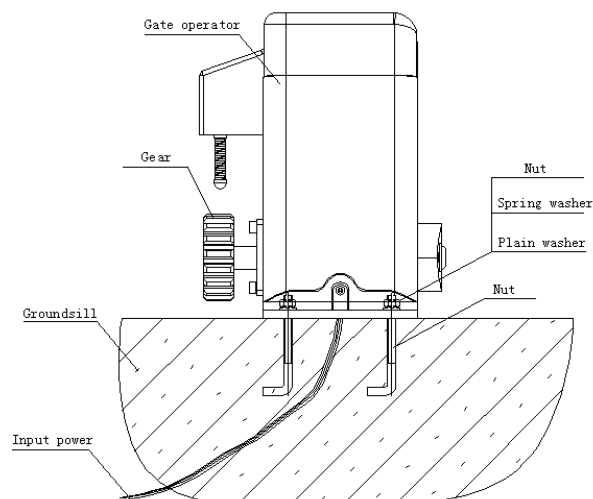


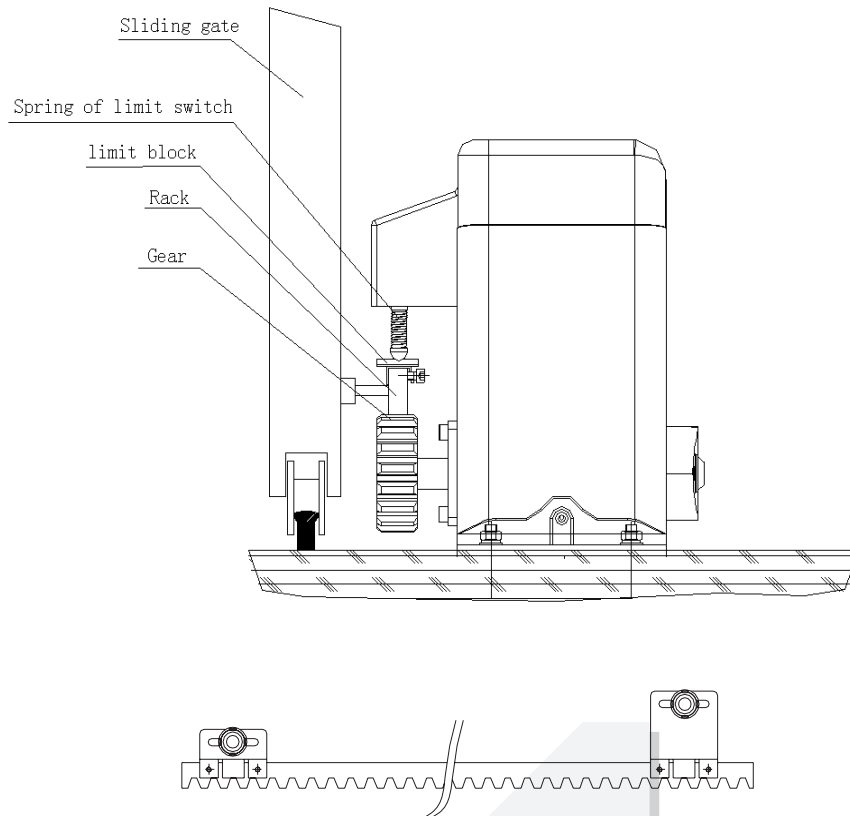
Installation and adjustment

Operator base

After the concrete has hardened, mount the gate operator base to the concrete pad. Verify that the base is properly leveled.

Using bolts and washers, mount the gate operator to the base and insert the cover. Check the operator and make sure it is lined up with the gate.





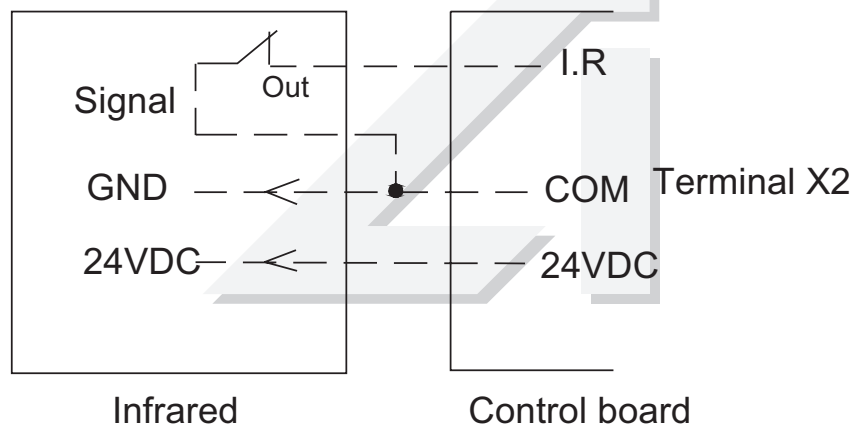
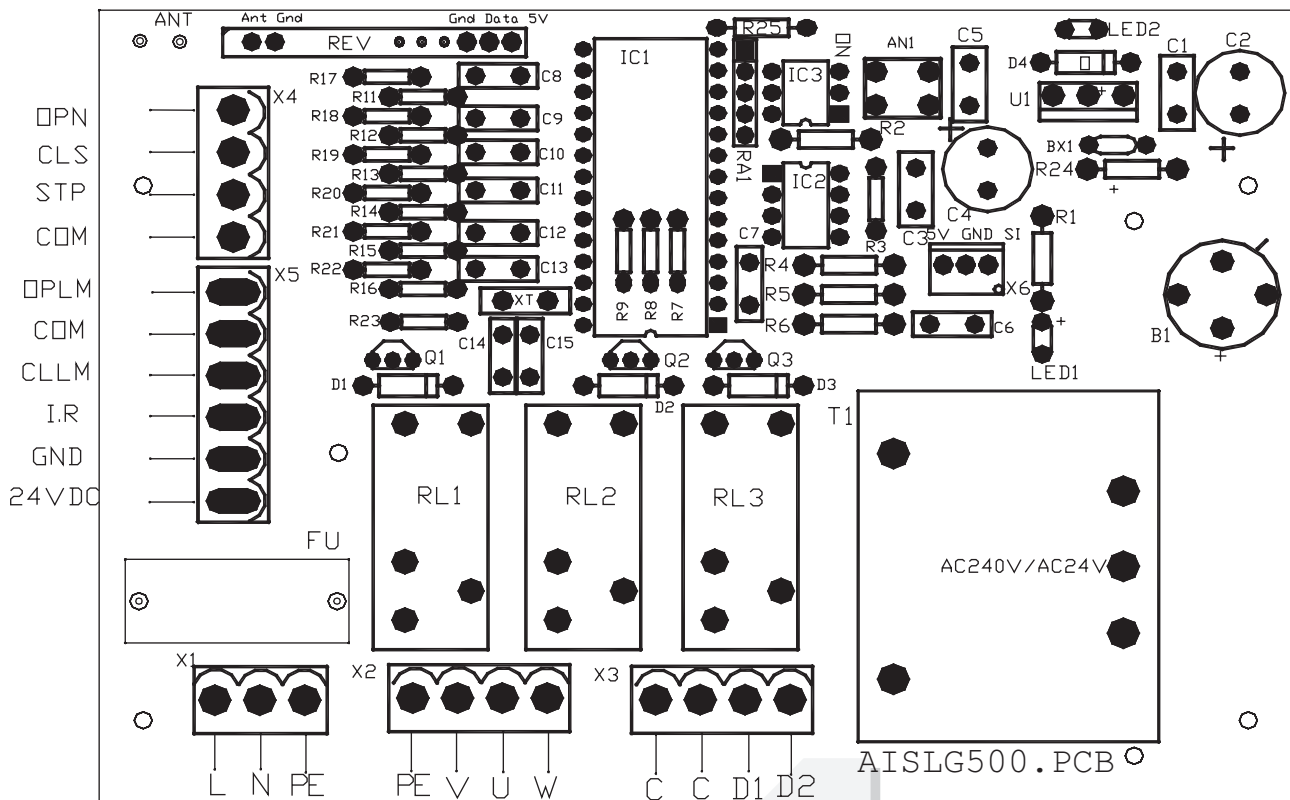
Spring limit switch

To ensure safety, it is recommended to install limit switches at both ends of the gate to prevent the gate from sliding out of the rails. The rails must be installed horizontally.

Install the limit block as shown in Figure above. The spring limit switch and blocks are used to control the position of the gate.

Release the gear with the key and push the sliding gate manually to pre-determine the position, fix the block to the rack and lock the gear by push up the release bar. Moving the gate electrically, adjust the block to the proper position until the position of the opening and closing meet the requirement.





Infrared with DC input

Wiring notes of control board

- Power Input(X1) : E (Earth), L (Live), N (Neutral).
- Caution light : connect caution light wire to D1 and D2(terminal X3)
- Output power supply : 24VDC, COM (COM), I.R. (N.C Infrared) If the infrared beam is interrupted during closing, the gate will reverse and open immediately. The product is not factory equipped with an infrared device, the infrared output signal must be N.C.

Verify open direction : If the gate does not move in the desired direction, then you will need to reverse the motor operating direction, open the plastic cover, you can do this by exchanging wires 'U' and 'W', 'OPLM' and 'CLLM'.

Remote control : The remote control works in a single channel mode. It has four buttons. The function of button 1, button 2, button 3 and button 4 are the same. With each press of the remote control button which has been programmed, the gate will close, stop, open.



AI-SLG-800 Specifications

Description	AC MOTOR
Power supply	220V±10% 50HZ
Power of Motor	AC 280W
Current	3A
Max weight of gate	≤800kg
Thermal protection on motor winding	120°C
Working environment	-20°C~55°C
IP Rating	IP 44

AI-SLG-500 Specifications

Description	AC MOTOR
Power supply	220V±10% 50HZ
Power of Motor	AC 200W
Current	2.5A
Max weight of gate	≤500kg
Thermal protection on motor winding	120°C
Working environment	-20°C~50°C
IP Rating	IP 44

Important Notes :

1. Any unauthorised connection to the Micro Controller will make the Warranty invalid
2. If the installation is not carried out as per Auto Ingress recommended guideline, Warranty is void
3. For activation of the operator by any other mode or connection to other external device not provided in the manual, please contact our technician team
4. We strongly recommend regular maintenance of the operator for its optimum performance
5. Auto Ingress reserves the right to change the design and specification without prior notification



Head Office - Australia

Indian Office

Auto Ingress India Pvt Ltd

B-4/32, SIDCO Industrial Estate, Maraimalai Nagar, Chennai - 603209 Tamil Nadu, India

Phone: +91 44 2745 2151, Mobile: +91 755 00 22 007 | +91 733 88 52 901 – 905

Email: sales@autoingress.in | www.autoingress.in